

# Snowmobile Closures within Mountain Caribou Recovery Area Mt Rider Closure

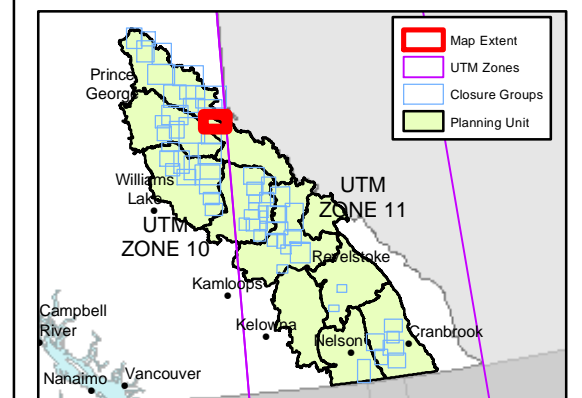
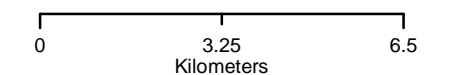
- Area Closed to Snowmobiles under Legal Order
- Area Open To Snowmobiles Year Round
- Parks and Protected Areas
- Wildlife Management Unit Boundary
- Highway
- Unpaved Road
- Private Land
- Glaciers
- Lakes
- River/Creek

Please be aware that these closure information maps may change from time to time. Users are solely responsible to ensure they are using the most recent version(s) of the map(s).

### WARNING

Proceed at your own risk. Mountain environments, including the open riding areas and trails shown on the map, have areas of high avalanche risk, unmarked terrain hazards and other natural hazards. Individual riders are responsible to determine whether the areas are safe to ride, to use safe snowmobiling practices and to be aware of the local hazards.

Be trained in avalanche skills, be aware of current avalanche conditions and carry a transceiver, probe and shovel. For more information on avalanche safety visit [www.avalanche.ca](http://www.avalanche.ca) and download the Avalanche Canada mobile App.



**THIS MAP IS NOT TO BE USED FOR NAVIGATIONAL PURPOSES**



Coordinate System: NAD 1983 BC Environment Albers  
 Last updated: 02/12/2016  
 Updated by: camahood, FLNR Williams Lake